

AL KHOZAMA INTERNATIONAL SCHOOL, DAMMAM
B.E.S.T. Group of Schools, K.S.A.



Affiliated to CBSE – New Delhi, Affiliation No: 5730019

EV2 Revision Worksheet 1 (2021-22)

Subject: EVS

Date: _____ Topics: Block 19 Transport & Block 20 Uses of Water
Name: _____ Grade: 1 Section: _____

I. Read the given statements carefully and write True for a correct statement and False for an incorrect one.

a) Vehicles connect us with the rest of the world.

Ans: _____.

b) We can use a bicycle to travel outside the country.

Ans: _____.

c) We choose a vehicle based on our need.

Ans: _____.

d) We can wash clothes without water.

Ans: _____.

e) Animals need water to cool themselves.

Ans: _____.

f) Air is found everywhere around us.

Ans: _____.

2. Complete the sentences using words given in the help box.

many	wheels	Plants	Sailboat	wasting	water
------	--------	--------	----------	---------	-------

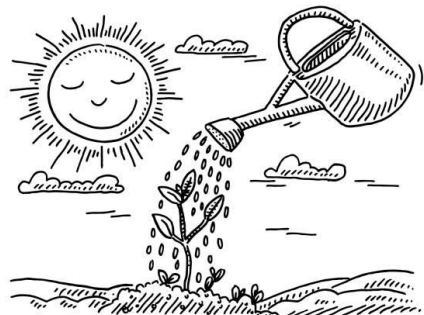
- a) _____ need water to make food.
- b) Boats are vehicles with no _____.
- c) Plants die when they do not get _____.
- d) Aeroplanes have _____ wheels.
- e) If we leave taps open while brushing, we are _____ water.
- f) _____ is an example of a water transport.

3. Label the given pictures using the captions given in the help box.

Means of transport	Plants need water	I need water	Wastage of water
--------------------	-------------------	--------------	------------------



a)



b)



c)



d)

4. Match words in column A with the correct words in column B.

Column A

Column B

a) Ambulance

1. Transport goods ()

b) Car

2. Plant will grow ()

c) Truck

3. Faster than a bus ()

d) Water a plant

4. Carry an injured person to hospital ()

e) Train

5. Go to office or school ()

5. Answer the given questions.

(a) What are the three modes of transport? Write one example for each mode.

(b) Name 3 vehicles used by people to travel and 3 vehicles used by people to transport goods.

(c) Write any two ways to save water.
